



National
Trust

Garden Building Collection



CRANE
SHEDS AND SUMMERHOUSES



This collection is inspired by beautiful buildings within National Trust estates.

Inspired by ages gone by yet using modern techniques, our new range of garden buildings are affordable and beautiful. They are real gardeners retreats, with traditional design features such as vertical sawn boards, a corrugated roof and a very attractive colour palette to choose from to suit any garden.

We took our inspiration for our garden range from the outbuildings and summerhouses of several National Trust properties scattered around East Anglia. We visited, photographed and literally got a real feel for these buildings of bygone times in these wonderful grounds.

We researched materials and construction and in collaboration

with the National Trust we drew our designs. These garden buildings will nestle in any garden, they are low maintenance and finished in a range of traditional colours to suit your surroundings.

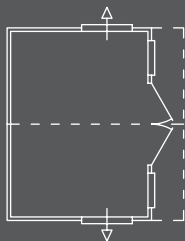
Constructed from timber sourced from an FSC[®] certified forest and mill (and being a climate friendly resource), the environmental sustainability of our product is very strong. In fact the garden sheds and the summerhouses themselves are FSC[®] certified which compliments our company's environmental policy. Manufactured in Norfolk by skilled craftsmen and installed by our professional team in your garden.

Features

- Handmade to order in our Norfolk workshop
- Choice of 6 colours from our National Trust range
- Delivered and installed in your garden
- Under 2.5m high to meet modern planning requirements
- Traditionally styled cross leaded windows with toughened glass
- Cast iron Fleur-de-Leys hinges and door furniture with mortice lock
- Olden style black corrugated roofing over a pine tongue and groove ceiling
- Crafted from FSC® certified Scandinavian redwood
- Traditionally cladded using vertical sawn boards
- Two opening windows
- Available in 4 different sizes

Building Sizes

1.8 x 2.4m
1.8 x 3.0m
2.4 x 2.4m
2.4 x 3.0m



The Ickworth
W240xL180xH246cm
(8 x 6ft)
£4,195



The Ickworth
W300xL180xH246cm
(10 x 6ft)
£4,665



The Ickworth
W240xL240xH247cm
(8 x 8ft)
£5,045



The Ickworth
W300xL240xH247cm
(10 x 8ft)
£5,245



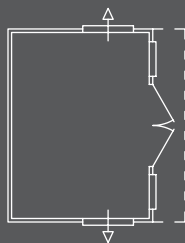
By Crane Sheds and Summerhouses

Features

- Handmade to order in our Norfolk workshop
- Choice of 6 colours from our National Trust range
- Delivered and installed in your garden
- Under 2.5m high to meet modern planning requirements
- Traditionally styled cross leaded windows with toughened glass
- Cast iron Fleur-de-Leys hinges and door furniture with mortice lock
- Olden style black corrugated roofing over a pine tongue and groove ceiling
- Crafted from FSC® certified Scandinavian redwood
- Traditionally cladded using vertical sawn boards
- Two opening windows
- Available in 4 different sizes

Building Sizes

1.8 x 2.4m
1.8 x 3.0m
2.4 x 2.4m
2.4 x 3.0m



The Flatford
W180xL240xH214cm
(6 x 8ft)
£3,995



The Flatford
W180xL300xH214cm
(6 x 10ft)
£4,465



The Flatford
W240xL240xH214cm
(8 x 8ft)
£4,795



The Flatford
W240xL300xH214cm
(8 x 10ft)
£4,995



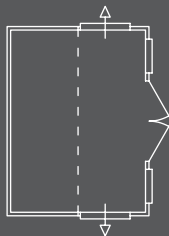
By Crane Sheds and Summerhouses

Features

- Handmade to order in our Norfolk workshop
- Choice of 6 colours from our National Trust range
- Delivered and installed in your garden
- Under 2.5m high to meet modern planning requirements
- Traditionally styled cross leaded windows with toughened glass
- Cast iron Fleur-de-Leys hinges and door furniture with mortice lock
- Olden style black corrugated roofing over a pine tongue and groove ceiling
- Crafted from FSC® certified Scandinavian redwood
- Traditionally cladded using vertical sawn boards
- Two opening windows
- Available in 4 different sizes

Building Sizes

1.8 x 2.4m
1.8 x 3.0m
2.4 x 2.4m
2.4 x 3.0m



The Lavenham
W180xL240xH243cm
(6 x 8ft)
£3,995



The Lavenham
W180xL300xH243cm
(6 x 10ft)
£4,465



The Lavenham
W240xL240xH246cm
(8 x 8ft)
£4,795



The Lavenham
W240xL300xH246cm
(8 x 10ft)
£4,995



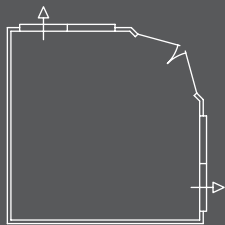
By Crane Sheds and Summerhouses

Features

- Handmade to order in our Norfolk workshop
- Choice of 6 colours from our National Trust range
- Delivered and installed in your garden
- Under 2.5m high to meet modern planning requirements
- Traditionally styled cross leaded windows with toughened glass
- Cast iron Fleur-de-Leys hinges and door furniture with mortice lock
- Olden style black corrugated roofing over a pine tongue and groove ceiling
- Crafted from FSC® certified Scandinavian redwood
- Traditionally cladded using vertical sawn boards
- Two opening windows
- Available in 2 different sizes

Building Sizes

2.4 x 2.4m
3.0 x 3.0m



The Orford
W240xL240xH223cm
(8 x 8ft)
£5,475



The Orford
W300xL300xH223cm
(10 x 10ft)
£5,995



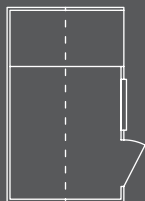
By Crane Sheds and Summerhouses

Features

- Handmade to order in our Norfolk workshop
- Choice of 6 colours from our National Trust range
- Delivered and installed in your garden
- Under 2.5m high to meet modern planning requirements
- Traditionally styled windows with toughened glass
- Cast iron black door furniture with a mortice lock
- Olden style black corrugated roofing over a pine tongue and groove ceiling
- Crafted from FSC® certified Scandinavian redwood
- Traditionally clad using vertical sawn boards
- 900mm wide logstore
- Available in 4 different sizes

Building Sizes

1.8 x 3.0m
1.8 x 3.6m
2.4 x 3.0m
1.8 x 3.6m
2.4 x 3.6m



The Blickling
Apex Logstore
W180xL300H243cm
(6 x 10ft)
£2,130



The Blickling
Apex Logstore
W180xL360xH243cm
(6 x 12ft)
£2,290



The Blickling
Apex Logstore
W240xL300xH249cm
(8 x 10ft)
£2,620



The Blickling
Apex Logstore
W240xL360xH249cm
(8 x 12ft)
£2,795



By Crane Sheds and Summerhouses

Features

- Handmade to order in our Norfolk workshop
- Choice of 6 colours from our National Trust range
- Delivered and installed in your garden
- Under 2.5m high to meet modern planning requirements
- Traditionally styled windows with toughened glass
- Cast iron black door furniture with a mortice lock
- Olden style black corrugated roofing over a pine tongue and groove ceiling
- Crafted from FSC[®] certified Scandinavian redwood
- Traditionally clad using vertical sawn boards
- Available in 3 different sizes
- Pent roof design

Building Sizes

1.8 x 2.4m
1.8 x 3.0m
2.4 x 3.0m



The Oxburgh

Pent
W180xL240xH218cm
(6 x 8ft)
£1,670



The Oxburgh

Pent
W180xL300xH218cm
(6 x 10ft)
£1,870



The Oxburgh

Pent
W240xL300xH218cm
(8 x 10ft)
£2,250



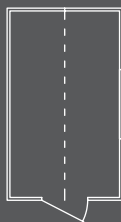
By Crane Sheds and Summerhouses

Features

- Handmade to order in our Norfolk workshop
- Choice of 6 colours from our National Trust range
- Delivered and installed in your garden
- Under 2.5m high to meet modern planning requirements
- Traditionally styled windows with toughened glass
- Cast iron black door furniture with a mortice lock
- Olden style black corrugated roofing over a pine tongue and groove ceiling
- Crafted from FSC® certified Scandinavian redwood
- Traditionally clad using vertical sawn boards
- Available in 3 different sizes
- Apex roof design with a door in the gable end

Building Sizes

1.8 x 2.4m
1.8 x 3.0m
2.4 x 3.0m



The Peckover

Apex door in gable
W180xL240xH243cm
(6 x 8ft)
£1,720



The Peckover

Apex door in gable
W180xL300xH243cm
(6 x 10ft)
£1,910



The Peckover

Apex door in gable
W240xL300xH249cm
(8 x 10ft)
£2,310



By Crane Sheds and Summerhouses

Features

- Handmade to order in our Norfolk workshop
- Choice of 6 colours from our National Trust range
- Delivered and installed in your garden
- Under 2.5m high to meet modern planning requirements
- Traditionally styled windows with toughened glass
- Cast iron black door furniture with a mortice lock
- Olden style black corrugated roofing over a pine tongue and groove ceiling
- Crafted from FSC® certified Scandinavian redwood
- Traditionally cladded using vertical sawn boards
- Available in 3 different sizes
- Apex roof design with a door in the side

Building Sizes

1.8 x 2.4m
1.8 x 3.0m
2.4 x 3.0m



The Felbrigg
Apex door in side
W180xL240xH243cm
(6 x 8ft)
£1,720



The Felbrigg
Apex door in side
W180xL300xH243cm
(6 x 10ft)
£1,910



The Felbrigg
Apex door in side
W240xL300xH249cm
(8 x 10ft)
£2,310



By Crane Sheds and Summerhouses

Colour Palette

Inspired by the special places cared for by the National Trust, these colours have been selected from the National Trust paint range.

This colour chart is designed to provide an indication of the colours in our palette. It cannot be taken as an exact replication of colour. However, we are happy to send out colour samples.



Wades Lantern



Terrace Green



Dome Ochre



Earls Grey



Disraeli Green



Painters Grey

Specifications

Side Walls

12 x 150mm sawn cladding topped with 14 x 30mm sawn cladding on 38 x 50mm planed framing.

Door

For the summerhouses one pair of joinery made, double doors 1830mm wide x 1100mm. $\frac{3}{4}$ glazed with 4mm toughened safety glass and cross leaded. Fitted with a mortice lock and finished with black Fleur-de-Leys hinges and door handles.

For the sheds a 710 x 1800mm joinery made, ledged and braced door, hung with the use of black strap hinges and secured with a mortice lock and black handle.

Windows

For the summerhouses, 4 cross leaded, 4mm toughened safety glass windows set into a joinery made frame. 2 of the windows opening and furnished with black Fleur-de-Leys casement stays and window fasteners.

For the sheds, fixed Georgian windows fitted with 4mm toughened safety glass set into a joinery made frame.

Floor

Ex 19 x 125mm tongue and groove floorboards on 38 x 50mm tanalised planed floor joists set at no more than 450mm centres.

Roof

Ex 19 x 125mm tongue and groove roof boarding on an Ex 38 x 50mm frame covered with corrugated roof sheeting.

Height

All buildings are under 2.5m to the ridge, to meet planning requirements, and have an internal eave height of 1.9m on the Blickling, Peckover, Felbrigg, Orford, Lavenham and Ickworth. And 1.8m on the Oxburgh and Flatford.

Paint

Painted with a coat of microporous paint, please choose your colour from our National Trust palette.

Crane Sheds and Summerhouses

Crane Sheds and Summerhouses is a family run business, making timber buildings in Norfolk for over 40 years. We are proud to acknowledge that much of our trade is built around our reputation. We firmly believe that this is because we provide a personal service from design stage to installation, where the customer always comes first and is delighted with their building.

Our buildings are exceptional and unrivalled. We source the best quality timber and materials for every stage of our building process right down to the paint systems we use.

We employ skilled craftsmen and a well regarded installation team to finish your building to the very highest of our expected standards.

Telephone 01760 444229

www.craneshedsandsummerhouses.co.uk



The mark of
responsible forestry



We've been dedicated to protecting our countryside and heritage since 1895 and these products have been carefully created by Crane Sheds and Summerhouses to meet our ethical and environmental standards. As a charity we rely on the support of our members and the public to help us look after this country's special places - for ever, for everyone.

www.nationaltrust.org.uk

Produced under licence from The National Trust (Enterprises) Ltd.

The National Trust (Enterprises) Limited is a trading subsidiary of The National Trust (Registered Charity No.205846) and trades in support of its charitable objectives.