

Refrigerator

JLLFW1815

User manual

John Lewis

Contents

Safety instructions	3	Technical data	22
Product description	6	Noises	23
Control panel	7	Repairs-After Sales Service	25
Display/Indicator	7		
Switching on	7		
Switching off	7		
Temperature regulation	8		
Functions Menu	8		
Child Lock Function	8		
Shopping Function	8		
Eco Mode Function	8		
Extra Humidity function	8		
Holiday Function H	9		
Daily use	10		
Movable shelves	10		
Positioning the door shelves	10		
Bottle rack	10		
MAXIBOX drawer	11		
Helpful hints and tips	12		
Care and cleaning	13		
Cleaning the interior	13		
Periodic cleaning	13		
Defrosting the refrigerator	14		
Replacing the carbon filter	14		
Troubleshooting	15		
Replacing the lamp	16		
Closing the door	16		
Installation	17		
Positioning	17		
Location	17		
Electrical Connection	18		
Rear spacers	19		
Levelling	19		
Installation of the Taste Guard Filter	19		
Door reversibility	20		



Safety instructions

In the interest of your safety and to ensure the correct use, before installing and first using the appliance, read this user manual carefully, including its hints and warnings. To avoid unnecessary mistakes and accidents, it is important to ensure that all people using the appliance are thoroughly familiar with its operation and safety features. Save these instructions and make sure that they remain with the appliance if it is moved or sold, so that everyone using it through its life will be properly informed on appliance use and safety. For your own personnel safety and the safety of your property please follow the instructions and warnings provided in this user guide. The manufacturer cannot be held responsible for any damages caused by not following these instructions.

Children and vulnerable people safety

- This appliance is not intended for use by persons (including children) with reduced physical, sensory or mental capabilities, or lack of experience and knowledge, unless they have been given supervision or instruction concerning use of the appliance by a person responsible for their safety. Children should be supervised to ensure that they do not play with the appliance.
- Keep all packaging well away from children. There is risk of suffocation.
- If you are discarding the appliance pull the plug out of the socket, cut the connection cable (as close to the appliance as you can) and remove the door in order to prevent playing children from suffering an electric shock or from closing themselves inside.

- If this appliance which has a magnetic door seal is replacing an older appliance which has a spring lock (latch) on the door or lid, please make sure that the lock is made unusable before it is discarded. This will prevent the danger of a child becoming trapped inside.

General safety



Warning! Keep ventilation openings, in the appliance enclosure or in the built-in structure, clear of obstruction.

- The appliance is intended for keeping foodstuff and/or beverages in a normal household and similar applications such as:
 - staff kitchen areas in shops, offices and other working environments;
 - farm houses and by clients in hotels, motels and other residential type environments;
 - bed and breakfast type environments;
 - catering and similar non-retail applications.
- Do not use a mechanical device or any artificial means to speed up the thawing process.
- Do not use other electrical appliances (such as ice cream makers) inside refrigerating appliances, unless they are approved for this purpose by the manufacturer.
- Do not damage the refrigerant circuit.
- The refrigerant isobutane (R600a) is contained within the refrigerant circuit of the appliance, a natural gas with a high level of environmental compatibility, it is nevertheless flammable. During transportation and installation of the appliance, be certain that none of the components of the refrigerant circuit become damaged.

If the refrigerant circuit should become damaged:

- avoid open flames and sources of ignition
- thoroughly ventilate the room in which the appliance is situated
- It is dangerous to alter the specifications or modify this product in any way. Any damage to the cord may cause a short-circuit, fire and/or electric shock.



Warning! Any electrical component (power cord, plug, compressor) must be replaced Service Force agent.

1. Power cord must not be lengthened.
 2. Make sure that the power plug is not squashed or damaged by the back of the appliance. A squashed or damaged power plug may overheat and cause a fire.
 3. Make sure that you can easily gain access to the mains plug of the appliance.
 4. Do not pull the mains cable.
 5. If the power plug socket is loose, do not insert the power plug. There is a risk of electric shock or fire.
 6. You must not operate the appliance without the lamp cover of interior lighting.
- This appliance is heavy. Care should be taken when moving it.
 - Do not remove nor touch items from the freezer compartment if your hands are damp/wet, as this could cause skin abrasions or frost/freezer burns.
 - Avoid prolonged exposure of the appliance to direct sunlight.
 - Bulb lamps used in this appliance are special purpose lamps selected for household appliances use only. They are not suitable for household room illumination.

Daily Use

- Do not place hot items such as pans and baking trays near the plastic components of the appliance.
- Do not store flammable gas and liquid in the appliance, because they may explode.
- Do not place food products directly against the air outlet on the rear wall.¹⁾
- Frozen food must not be re-frozen once it has been thawed out.
- Store pre-packed frozen food in accordance with the frozen food manufacturer's instructions.
- Appliance's manufacturers storage recommendations should be strictly adhered to. Refer to relevant instructions.
- Do not place carbonated or fizzy drinks in the freezer compartment as it creates pressure on the container, which may cause it to explode, resulting in damage to the appliance.
- Ice lollies can cause frost burns if consumed straight from the appliance.

Care and cleaning

- Before maintenance, switch off the appliance and disconnect the mains plug from the mains socket.
- Do not clean the appliance with metal objects.
- Do not use sharp objects to remove frost from the appliance. Use a plastic scraper.
- Regularly examine the drain in the refrigerator for defrosted water. If necessary, clean the drain. If the drain is blocked, water will collect in the bottom of the appliance.

1) If the appliance is Frost Free

Installation

Important! For electrical connection carefully follow the instructions given in specific paragraphs.


- Unpack the appliance and check if there are damages on it. Do not connect the appliance if it is damaged. Report possible damages immediately to the place you bought it. In that case retain packing.
- It is advisable to wait at least four hours before connecting the appliance to allow the oil to flow back in the compressor.
- In order to prevent over heating there must be adequate circulation around the appliance.
- Please refer to the correct positioning and location instructions that can be found in the Installation section of this user guide.
- The appliance must not be located close to radiators or cookers.
- Make sure that the mains plug is accessible after the installation of the appliance.

Service

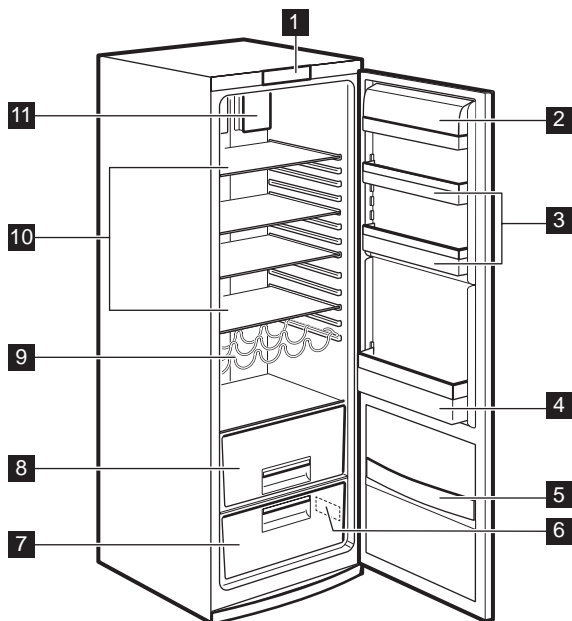
- Any electrical work required to do the servicing of the appliance should be carried out by a qualified electrician or competent person.
- This product must be serviced by an authorized Service Centre, and only genuine spare parts must be used.

Environment Protection



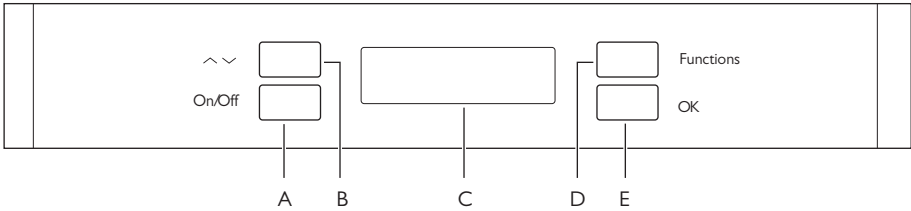
This appliance does not contain gasses which could damage the ozone layer, in either its refrigerant circuit or insulation materials. The appliance shall not be discarded together with the urban refuse and rubbish. The insulation foam contains flammable gases: the appliance shall be disposed according to the applicable regulations to obtain from your local authorities. Avoid damaging the cooling unit, especially at the rear near the heat exchanger. The materials used on this appliance marked by the symbol  are recyclable.

Product description



- 1** Control panel
- 2** Butter shelf
- 3** Dairy shelves
- 4** Bottle shelf
- 5** Snack shelf
- 6** Rating plate
- 7** Vegetable drawer
- 8** Maxibox drawer
- 9** Bottle rack
- 10** Glass Shelves
- 11** Cleanair control

Control panel



A - Appliance button ON/OFF

B - Temperature regulation button

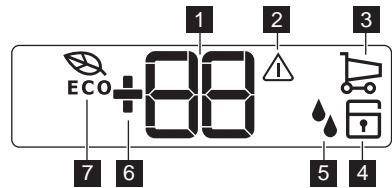
C - Temperature and function indicator

D - Function button

E - Confirmation button

It is possible to change predefined sound of buttons to a louder one by pressing together the Functions button and Temperature colder button for some seconds. Change is reversible.

Display/Indicator



1 Temperature indicator.

2 Alarm indicator

3 Shopping function

4 Child Lock function

5 Extra Humidity function

6 Positive temperature indicator

7 Eco mode function

Switching on

Insert the plug into the power outlet. If the display is not illuminated, press button (A), to start the appliance.

For optimal food storage select the Eco Mode and the temperature is set to +5°C in the fridge.

To select a different temperature refer to "Temperature regulation".

Important! If the door remains open for some minutes, the light will turn off automatically. The light is reset by closing and opening the door itself.

Switching off

The appliance is shut off by pressing button (A) until a countdown from -3 -2 -1 is completed.

Temperature regulation

The temperature may be changed by pressing the button (B).

The current temperature setting flashes and by pressing button (B) again the set temperature is possible to change in steps of one degree.

The selected-temperature will be reached within 24 hours.

Functions Menu

By activating the button (D) the functions menu is operating.

Each function could be confirmed by pressing button (E). If there is no confirmation after some seconds the display will go out from the menu and return in normal condition.

The following functions are indicated:


 Child Lock function

 Shopping function

 Eco Mode function

 Extra Humidity function

Child Lock Function


The Child Lock function is activated by pressing key (D) (several times if necessary) until the corresponding icon appears .

You must confirm the choice by pressing key (E) within few seconds. You will hear the buzzer and the icon remains lighted. In this condition any possible operation through the keys does not cause any change as long as this function is activated.

It is possible to de-activate the function at any time by pressing key (D) until the corresponding icon will flash and then key (E).


Shopping Function

If you need to insert a large amount of warm food, for example after doing the grocery shopping, we suggest activating the Shopping function to chill the products more rapidly and to avoid warming the other food which is already in the refrigerator.

The Shopping function is activated by pressing key (D) (several times if necessary) until the corresponding icon appears . You must confirm the choice by pressing key (E) within few seconds. You will hear the buzzer and the icon remains lighted.

The Shopping function shuts off automatically after approximately 6 hours. It is possible to deactivate the function at any time by pressing key (D) until the corresponding icon will flash and then key (E).

Eco Mode Function

The Eco Mode function is activated by pressing button D (several times if necessary) until the corresponding icon appears  (or setting the temperature at +5°C).

You must confirm the choice by pressing button E within few seconds. You will hear the buzzer and the icon remains lighted.

In this condition the chosen temperatures are automatically set (+5°C), in the best conditions for storing food.

It is possible to de-activate the function at any time by changing the selected temperature in the compartment.

Extra Humidity function

If you need to increase the humidity in the refrigerator, we suggest activating the Extra Humidity function.

The Extra Humidity function is activated by pressing button (D) (several times if necessary) until the corresponding icon appears.

You must confirm the choice by pressing button (E) within few seconds. You will hear the buzzer and the icon remains lighted.

It is possible to deactivate the function at any time by pressing button (D) until the corresponding icon will flash and then button (E).

Holiday Function H

The Holiday function sets the temperature at approx +15°C. This function allows you to keep the refrigerator shut and empty during a long holiday period (e. g. the summer holidays) without the formation of a bad odours.

The Holiday Function H may be regulated by pressing the button B. By pressing the button B the current temperature setting flashes on the indicator. Press the button B again. When on the display appears the letter H confirm the choice of the temperature or by pressing the button E, (you will hear the buzzer) or by waiting for some seconds (you will not hear the buzzer).

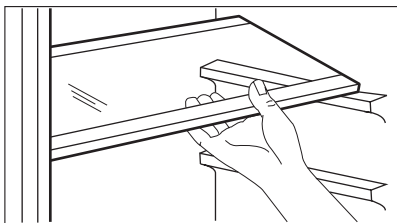
Now the refrigerator is in the Holiday function in the energy- saving mode and the indicator shows the letter H. It is possible to deactivate the function at any time by changing the selected temperature in the compartment.



Warning! The fridge compartment must be empty with Holiday function on.

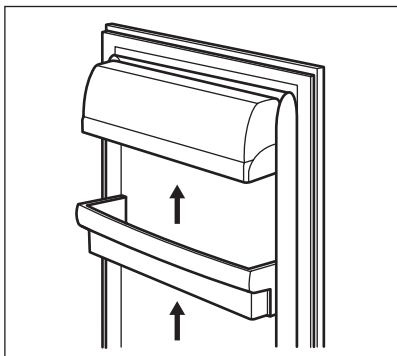
Daily use

Movable shelves



The walls of the refrigerator are equipped with a series of runners so that the shelves can be positioned as desired.

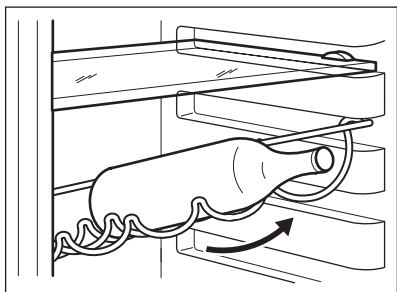
Positioning the door shelves



To permit storage of food packages of various sizes, the door shelves can be placed at different heights.

To make these adjustments proceed as follows: gradually pull the shelf in the direction of the arrows until it comes free, then reposition as required.

Bottle rack



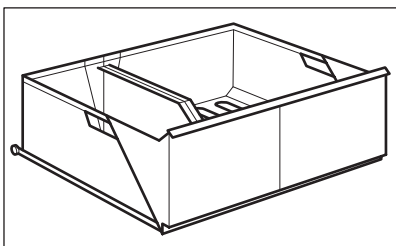
Place the bottles (with the opening facing front) in the pre-positioned shelf.

Important!

If the shelf is positioned horizontally, place only closed bottles.

This bottle holder shelf can be tilted in order to store previously opened bottles. To obtain this result, pull the shelf up so it can rotate upwards and be placed on the next higher level.

MAXIBOX drawer



The drawer is suitable for storing fruit and vegetables.

There is a separator inside the drawer that can be placed in different positions to allow for the subdivision best suited to personal needs.

There is a grill on the bottom of the drawer to separate the fruit and vegetables from any condensation that may form on the bottom surface.

Remove all parts inside the drawer for cleaning purposes.

Helpful hints and tips

Hints for energy saving

- Do not open the door frequently or leave it open longer than absolutely necessary.
- If the ambient temperature is high and the Temperature Regulator is set to a low temperature and the appliance is fully loaded, the compressor may run continuously, causing frost or ice on the evaporator. If this happens, set the Temperature Regulator towards a warmer setting to allow automatic defrosting and will therefore reducing electricity consumption.

Hints for fresh food refrigeration

To obtain the best performance:

- do not store warm food or hot liquids in the refrigerator
- Cover or wrap the food, particularly if it has a strong flavour
- position food so that air can circulate freely around it

Hints for refrigeration

Useful hints:

Meat (all types) : wrap in polythene bags and place on the glass shelf above the vegetable drawer.

For safety, store in this way only one or two days at the most.

Cooked foods, cold dishes, etc.: these should be covered and may be placed on any shelf.

Fruit and vegetables: these should be thoroughly cleaned and placed in the special drawer(s) provided.

Butter and cheese: these should be placed in special airtight containers or wrapped in aluminium foil or polythene bags to exclude as much air as possible.

Milk bottles: these should have a cap and should be stored in the bottle rack on the door.

Bananas, potatoes, onions and garlic, if not packed, must not be kept in the refrigerator.

Care and cleaning

Cleaning the interior

Before using the appliance for the first time, wash the interior and all internal accessories with lukewarm water and some neutral soap to remove the typical smell of a brand-new product, then dry thoroughly.

Important! Do not use detergents or abrasive powders, as these will damage the finish.



Caution! Unplug the appliance before carrying out any maintenance operation.



This appliance contains hydrocarbons in its cooling unit; maintenance and recharging must therefore only be carried out by authorized technicians.

Periodic cleaning

The equipment has to be cleaned regularly:

- clean the inside and accessories with lukewarm water and some neutral soap.
- regularly check the door seals and wipe clean to ensure they are clean and free from debris.

- rinse and dry thoroughly.

Important! Do not pull, move or damage any pipes and/or cables inside the cabinet.

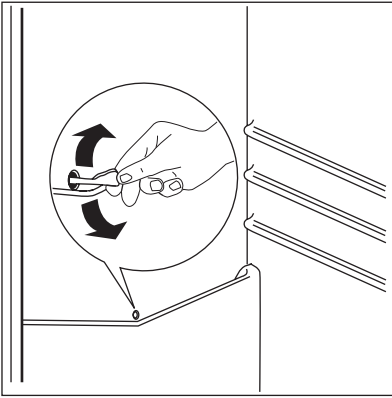
Never use detergents, abrasive powders, highly perfumed cleaning products or wax polishes to clean the interior as this will damage the surface and leave a strong odor.

Clean the condenser (black grill) and the compressor at the back of the appliance with a brush. This operation will improve the performance of the appliance and save electricity consumption.

Important! Take care not to damage the cooling system.

Many proprietary kitchen surface cleaners contain chemicals that can attack/damage the plastics used in this appliance. For this reason it is recommended that the outer casing of this appliance is only cleaned with warm water with a little washing-up liquid added.

Defrosting the refrigerator



Frost is automatically eliminated from the evaporator of the refrigerator compartment every time the motor compressor stops, during normal use. The defrost water drains out through a drain hole into a special container at the back of the appliance, over the motor compressor, where it evaporates.

It is important to periodically clean the defrost water drain hole in the middle of the refrigerator compartment channel to prevent the water overflowing and dripping onto the food inside. Use the special cleaner provided, which you will find already inserted into the drain hole.

Replacing the carbon filter

To get best performance the carbon air filter should be changed once every year.

New active air filters can be purchased from your local dealer.

Refer to “Installation of the carbon air filter” for the instructions.

The air filter is a consumable accessory and as such is not covered by the guarantee.

Troubleshooting

During operation of the appliance some smaller but annoying problems can often occur, which does not require calling a technician out. In the following chart information is given about them to avoid unnecessary charges on service.

Important! The operation of the appliance generates certain sounds (compressor and circulating sound). This is normal during standard operation.

Important! The appliance operates intermittently, so the stopping of the compressor does not mean it is disconnected. That is why you must not touch the electrical parts of the appliance before breaking the circuit.

Problem	Possible cause	Solution
The appliance is noisy.	The appliance is not level.	Check if the appliance is stable (all feet and wheels should be on the floor). Refer to "Levelling".
The buzzer sounds. The Alarm icon flashing.	The door is not closed correctly.	Refer to "Door open alarm".
□ upper or lower square is shown in the temperature display.	An error has occurred in measuring the temperature	Call your service representative (the cooling system will continue to keep food products cold, but temperature adjustment will not be possible)
"dEMo" appears on the display.	The appliance is in demonstration mode.	Keep pressed approximately 10 sec the OK button until a long sound of buzzer is heard and the display shuts off for a short while: appliance starts works regularly.
The compressor runs continuously.	The Temperature regulator may be set incorrectly.	Set a warmer temperature.
	The door is not closed correctly.	Refer to "Closing the door".
	The door has been opened too frequently.	Do not keep the door open longer than necessary.
	The food temperature is too high.	Let the food temperature decrease to room temperature before storage.
	The room temperature is too high.	Decrease the room temperature.
Water flows inside the refrigerator.	The water outlet is clogged.	Clean the water outlet.
	Food is preventing water flowing into the water collector	Make sure that food does not touch the rear plate.

Problem	Possible cause	Solution
Water flows on the ground.	The melting water outlet does not flow in the evaporative tray above the compressor.	Attach the melting water outlet to the evaporative tray.
The temperature in the appliance is too cold.	The Temperature regulator may be set incorrectly.	Set a warmer temperature.
The temperature in the appliance is too warm.	The Temperature regulator may be set incorrectly.	Set a lower temperature.
	The door is not closed correctly.	Refer to "Closing the door".
	The food temperature is too high.	Let the food temperature decrease to room temperature before storage.
The temperature in the refrigerator is too warm.	There is no cold air circulation in the appliance.	Make sure that there is cold air circulation in the appliance.
	Large quantities of food to be cooled were put in at the same time.	Insert smaller quantities of food to be cooled at the same time.
The appliance does not operate.	The appliance is switched off.	Switch on the appliance.
	The mains plug is not connected to the mains socket correctly.	Connect the mains plug to the mains socket correctly.
	The appliance has no power. There is no voltage in the mains socket.	Connect a another electrical appliance to the mains socket. Check fuse. Contact a qualified electrician.
The lamp does not work.	The lamp is defective.	Refer to "Replacing the lamp".
	The door has been open to long.	Close the door.
Door interferes with ventilation grill.	The appliance is not levelled.	Refer to "Levelling".
Misaligned door.	The appliance is not level.	Refer to "Levelling".

As much as the advice does not lead to result, call the nearest brand-mark service.

Replacing the lamp

The appliance is equipped with a longlife LED interior light.

Only service is allowed to replace the lighting device. Contact your Service Center .

3. If necessary, replace the defective door gaskets. Contact the Service Center.

Closing the door

1. Clean the door gaskets.
2. If necessary, adjust the door. Refer to "Installation".

Installation



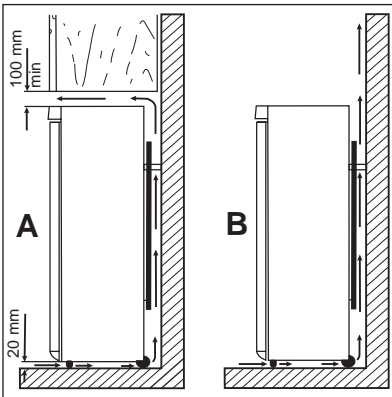
Read the "Safety Information" carefully for your safety and correct operation of the appliance before installing the appliance.

Climate class	Ambient temperature
SN	+10°C to + 32°C
N	+16°C to + 32°C
ST	+16°C to + 38°C
T	+16°C to + 43°C

Positioning

Install this appliance at a location where the ambient temperature corresponds to the climate class indicated on the rating plate of the appliance:

Location



The appliance should be installed well away from sources of heat such as radiators, boilers, direct sunlight etc. Ensure that air can circulate freely around the back of the cabinet. To ensure best performance, if the appliance is positioned below an overhanging wall unit, the minimum distance between the top of the cabinet and the wall unit must be at least 100 mm . Ideally, however, the appliance should not be positioned below overhanging wall units. Accurate levelling is ensured by one or more adjustable feet at the base of the cabinet.



Warning! It must be possible to disconnect the appliance from the mains power supply; the plug must therefore be easily accessible after installation.

Electrical Connection

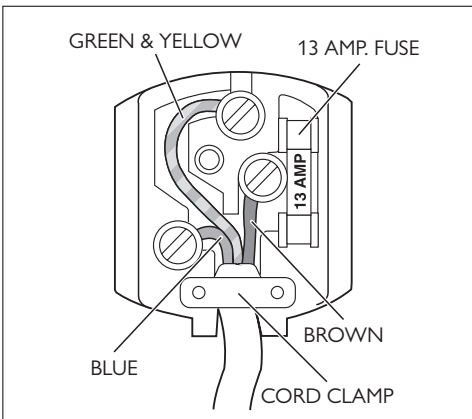


Caution! Any electrical work required to install this appliance should be carried out by a qualified electrician or competent person.



Warning! This appliance must be earthed. The manufacturer declines any liability should these safety measures not be observed.

Important! The wires in the mains lead are coloured in accordance with the following code:



1 Green and Yellow: Earth

3 Brown: Live
5 Blue: Neutral

As the colours of the wires in the mains lead of this appliance may not correspond with the coloured markings identifying the terminals in your plug, proceed as follows:

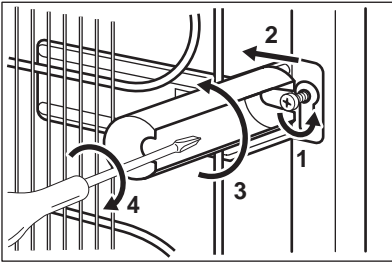
1. Connect the wire coloured green and yellow to the terminal marked either with the letter "E" or by the earth symbol \oplus or coloured green and yellow.
2. Connect the wire coloured blue to the terminal either marked with the letter "N" or coloured black.
3. Connect the wire coloured brown to the terminal either marked with the "L" or coloured red.
4. Check that no cut, or stray strands of wire is present and the cord clamp **4** is secure over the outer sheath.
5. Make sure the electricity supply voltage is the same as that indicated on the appliance rating plate.
6. Switch on the appliance.

The appliance is supplied with a 13 amp plug fitted **2**. In the event of having to change the fuse in the plug supplied, a 13 amp ASTA approved (BS 1362) fuse must be used.



Warning! A cut off plug inserted into a 13 amp socket is a serious safety (shock) hazard. Ensure that it is disposed of safely.

Rear spacers

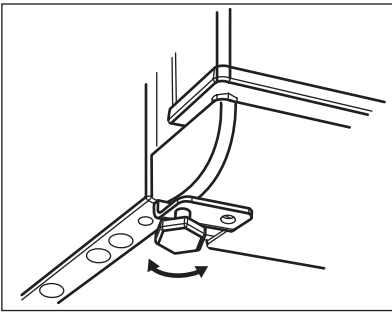


You can find the two spacers in the bag with documentation.

Do these steps to install the spacers:

1. Release the screw.
2. Engage the spacer below the screw.
3. Turn the spacer to the right position.
4. Tighten again the screws.

Levelling



Accurate levelling prevents the vibration and noise of the appliance during operation. To adjust the height of the appliance loosen or tighten the two adjustable front feet.

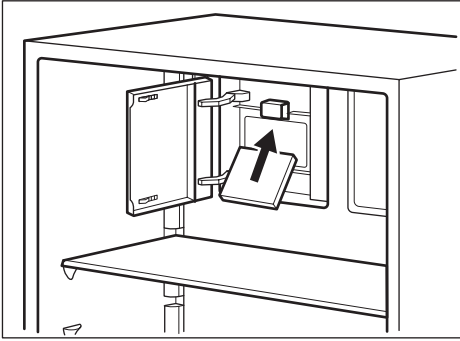
Installation of the Taste Guard Filter

The Taste Guard Filter is an active carbon filter which absorbs bad odours maintain the best flavour and aroma for all foodstuffs without risk of odour cross contamination.

On delivery the carbon filter is in a plastic bag to preserve performance.

- Open the air lever flap.
- Take the filter out of the plastic bag.
- Insert the filter in the slot found in the back of the air lever flap.
- Close the air lever flap.

Important! The filter should be handled carefully so fragments do not loosen from the surface.
Make sure that the air lever flap is closed to obtain proper function.



Door reversibility

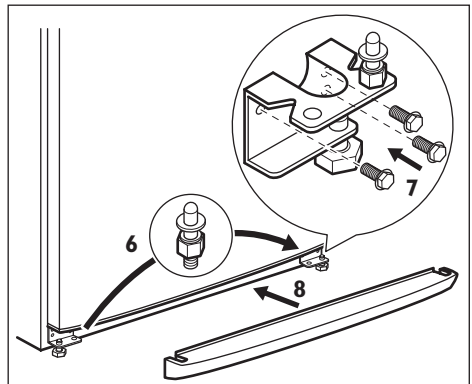
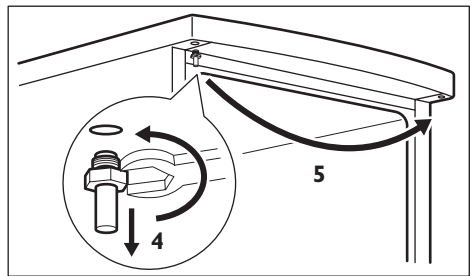
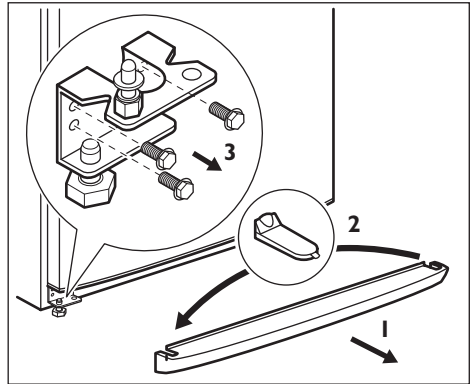


Warning! Before carrying out any operations, remove the plug from the power socket.

To carry out the following operations, we suggest that this be done with another person who will keep a firm hold on the door of the appliance during the operations. Gently lay the appliance on its back.

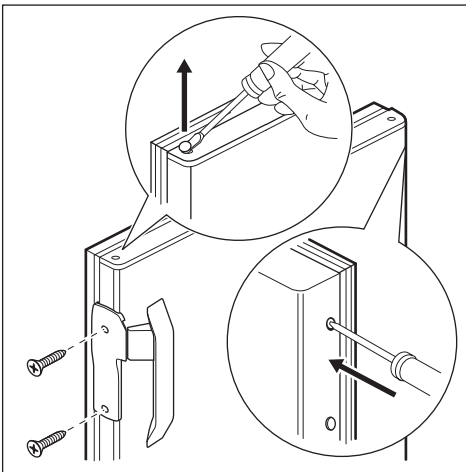
To change the opening direction of the door, do these steps:

- Remove the plug from the power socket.
- Tilt back the appliance carefully so that the compressor cannot touch the floor.
- Remove the plinth (1).
- Remove the cap (2) and position it on the opposite side.
- Unscrew the hinge (3) and remove the door.



- Unscrew the lower pin and the washers (3)
- Position the pin and the washers (6) on the opposite side (7) .
- Unscrew the other hinge .(5)
- Unscrew the upper pin (4) and screw it on the opposite side. (5)
- Refit the door.

- Refit and screw both lower hinges.
- Refit the plinth (8).
- Unscrew the handle. Remove the plug with a small screwdriver. Install the handle and the cap on opposite side. Take from the accessory bag the two caps and cover the holes left open after having removed the handle.



Do a final check to make sure that:

- All screws are tightened.
- The magnetic seal adheres to the cabinet.
- The door opens and closes correctly.

If the ambient temperature is cold (i.e. in Winter), the gasket may not fit perfectly to the cabinet. In that case, wait for the natural fitting of the gasket.

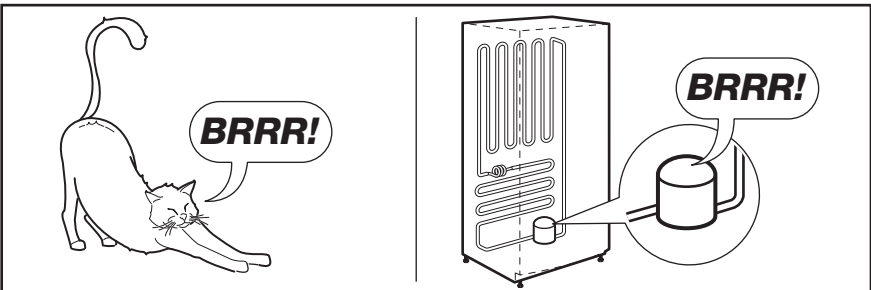
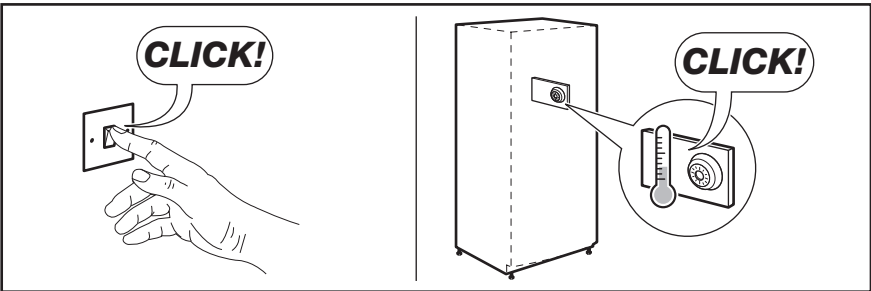
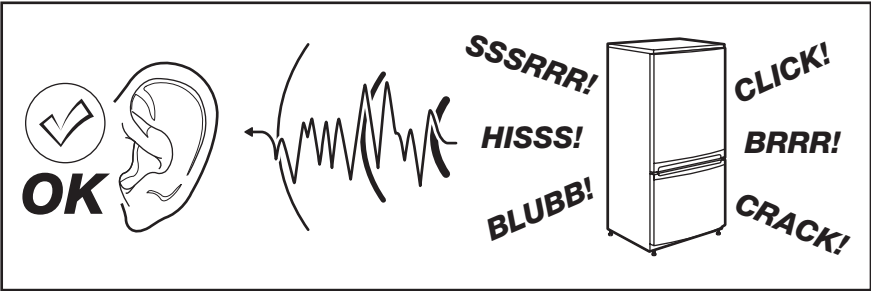
Technical data

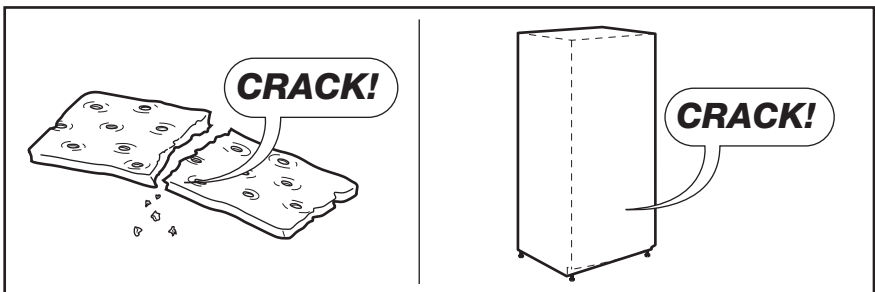
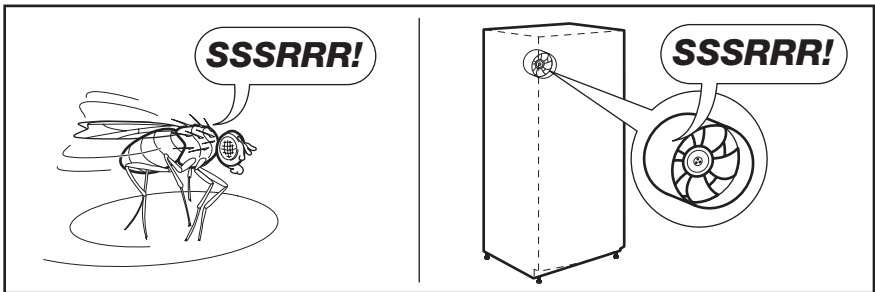
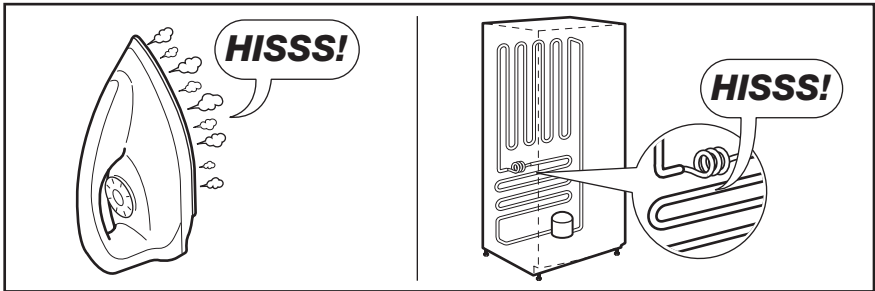
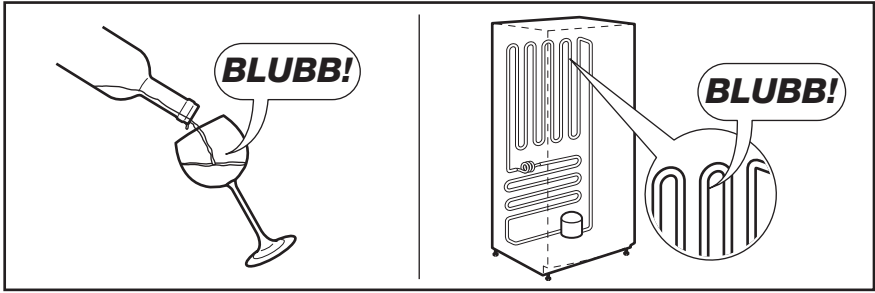
Dimension		
	Height	1850 mm
	Width	595 mm
	Depth	658 mm
Voltage		230-240 V
Frequency		50 Hz

The technical information are situated in the rating plate on the internal left side of the appliance and in the energy label.

Noises

There are some sounds during normal running (compressor, refrigerant circulation).





Repairs-After Sales Service

If the unlikely event of your appliance requiring service, or if you wish to purchase spare parts, please contact our extended warranty administrators by telephoning:

0870 010 7887

They will give you details of your local Service Force Centre.

Before calling out an engineer, please ensure you have read the details under the heading " Troubleshooting ".

When you contact your local repair agent you will need to give the following details:

1. Your name, address and post code.
2. Your telephone number.
3. Clear and concise details of fault.
4. The purchase date (found on your receipt).
5. The model and serial number of the appliance (found on the rating plate).

So that you always have these numbers at hand, we recommend that you make a note of them here:

Mod. :
PNC :
S.No. :

Your appliance is covered by a 3 year parts and labour guarantee (see separate details given at point of sale). Please retain your purchase receipt safely for the service engineer to verify the purchase details.

Spare parts

An authorized service engineer should service this product and only genuine spare parts should be used.

Under no circumstances should you attempt to repair the machine yourself. Repairs carried out by inexperienced persons may cause injury or serious malfunctioning. Contact your local repair agent by telephoning:

0870 010 7887

John Lewis, Oxford Street 020 7629 7711

Peter Jones, Sloane Square 020 7730 3434

John Lewis, Brent Cross 020 8202 6535

John Lewis, Kingston 020 8547 3000

John Lewis, Aberdeen 01224 625000

John Lewis, Bluewater 01322 624123

John Lewis, Cambridge 01223 361292

John Lewis, Cardiff 02920 536000

John Lewis, Cheadle 0161 491 4914

John Lewis, Cribbs Causeway 0117 959 1100

John Lewis at home, Croydon 020 8662 4730

John Lewis, Edinburgh 0131 556 9121

John Lewis, Glasgow 0141 353 6677

John Lewis, Home and Leisure,
High Wycombe 01494 462666

John Lewis, Leicester 0116 242577

John Lewis, Liverpool 0151 709 7070

John Lewis, Milton Keynes 01908 679171

John Lewis, Newcastle upon Tyne 0191 232
5000

John Lewis, Norwich 01603 660021

John Lewis, Nottingham 0115 941 8282

John Lewis, Peterborough 01733 344644

John Lewis at home, Poole 01202 756020

John Lewis, Reading 0118 957 5955

John Lewis, Sheffield 0114 276 8511

John Lewis, Solihull 0121 704 1121

John Lewis, Southampton 023 8021 6400

John Lewis, Stratford (Opening 2011)

John Lewis at home, Swindon 01793 733180

John Lewis, Trafford 0161 491 4040

John Lewis at home, Turnbridge Wells
01892 506830

John Lewis, Watford 01923 244266

John Lewis, Welwyn 01707 323456

**John Lewis electrical
appliances are also available
in Waitrose Food and Home**

Canary Wharf 020 7719 0300

Cheltenham 01242 241425

Rushden 01933 355099

Salisbury 01722 329429

Southend 01702 603403

© All rights reserved.

.....
.....
.....
.....
.....
.....
.....
.....
.....
.....
.....
.....
.....
.....
.....
.....
.....
.....
.....
.....
.....
.....
.....



280150512-A-032012